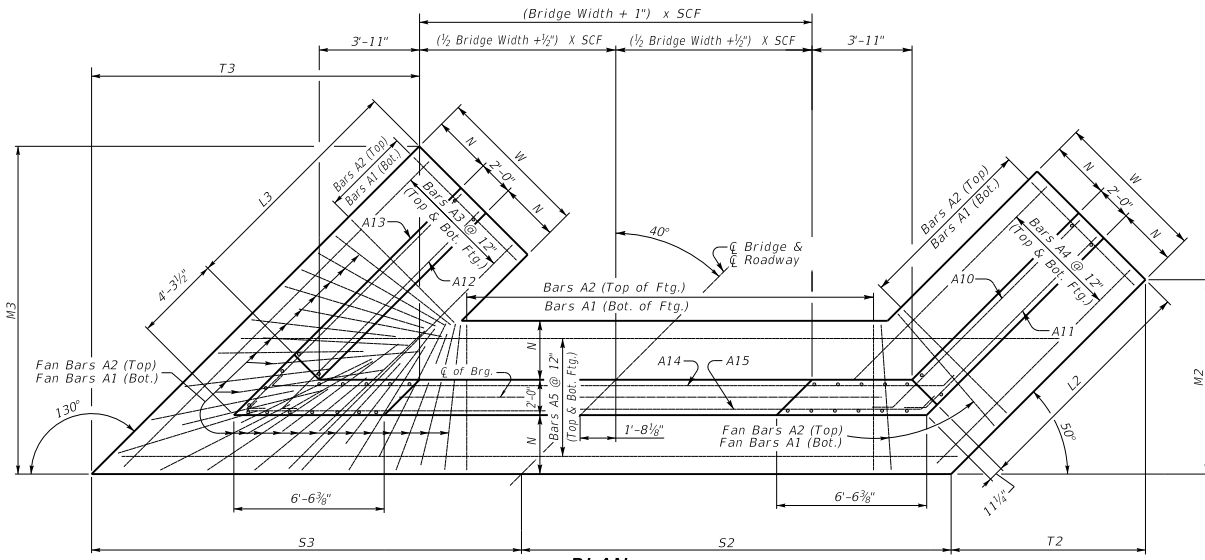


# 40° SKEW VARIABLE BRIDGE WIDTH 2:1 FILL SLOPES WINGS PARALLEL TO ROADWAY

ABUTMENT SKEW CORRECTION FACTOR (SCF) = 1.305

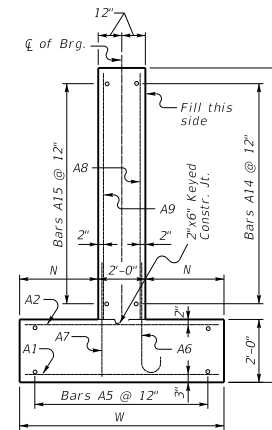


(Left Skew as shown; right skew opp. hand)

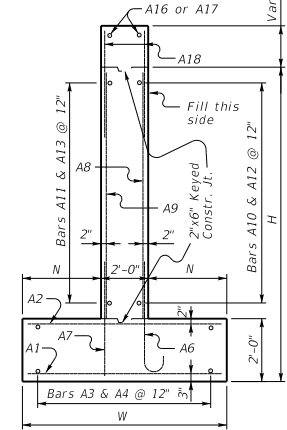
**PLAN**

NOTE: Trim A16 & A17 bars if necessary  
Trim A3 bars as necessary

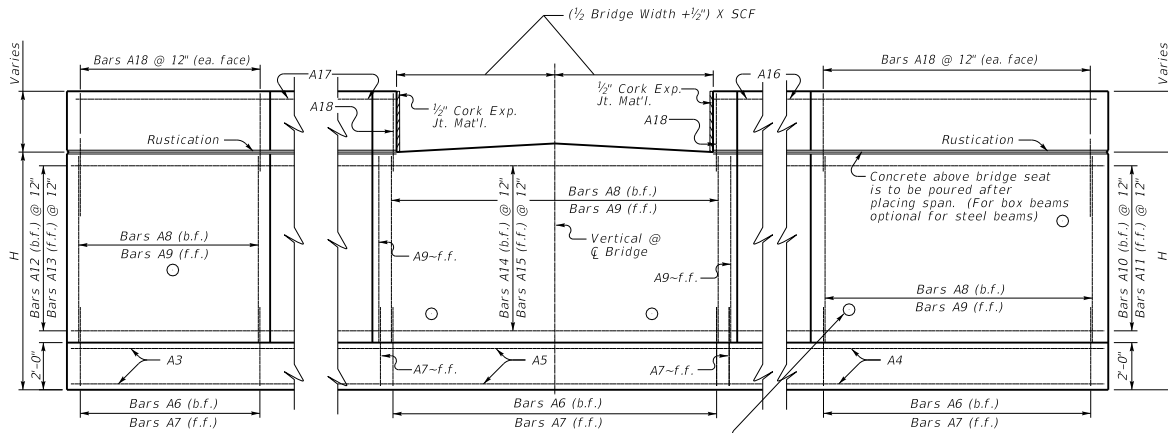
For fanning A1 & A2 bars with an acute angle, space @ 12" at face of toe, then as you get closer to the corner start pulling every other bar back toward the heel. (Similar to as shown)



**WALL SECTION**

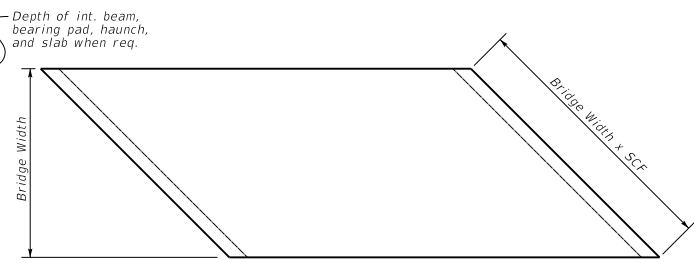


**WING SECTION**

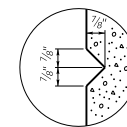


**ELEVATION**

Place 4" weep hole drains at 8'-0" centers at this elevation as to afford best drainage of backfill, in accordance with the Standard Specifications.



**PLAN OF SUPERSTRUCTURE SLAB**



**RUSTICATION GROOVE**

KENTUCKY DEPARTMENT OF HIGHWAYS	
40° SKEW VARIABLE WIDTH ABUTMENT PARALLEL WINGS	
STANDARD DRAWING NO. BSA-057	
SUBMITTED	02-26-20
DIRECTOR DIVISION OF STRUCTURAL DESIGN	
APPROVED	02-26-20
STATE ENGINEER	